

"The Sweetspire" by Watermark Homes, Inc.

140 Hazelwood Rd, Lillington, NC 27546

\$409,500

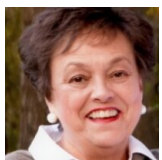
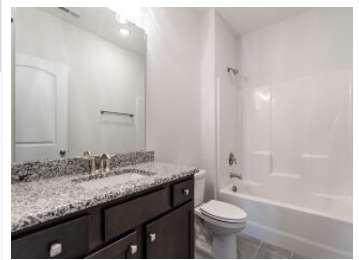
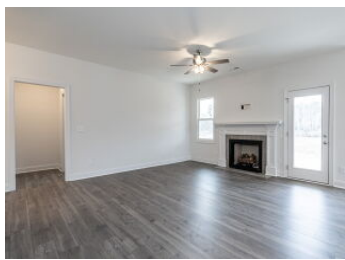
3 bedrooms & 3 bathrooms - 2253



View virtual tour at:
<https://tours.visualproperties.net/ac6ed129/>



'The Sweetspire' by Watermark Homes features an open living/dining/kitchen concept with a 1st floor owner's suite & 3 car garage. Beautiful open living room with a gas log fireplace, kitchen/dining area. Kitchen has granite tops, center island, tile backsplash and under counter lighting plus a large walk in closet! Owner's suite with ensuite features a large walk in shower, dual vanity & water closet. Large secondary bedrooms w/ full bath. 1st floor office & 3rd full bath. Separate laundry room, mudroom, covered rear porch and 3 car garage on .57 acre lot in beautiful South Creek subdivision located between Lillington & Angier. A must see!



Teresa Byrd

Realtor

196168

(919) 369-2444

teresa@teresabyrd.com

<http://www.teresabyrd.com>



The information contained herein has been obtained through sources deemed reliable, but cannot be guaranteed as to its accuracy. Not intended to solicit buyers or sellers currently under contract with a brokerage.