

2405 Glenwood Ave, Raleigh, NC 27608

\$2,795,000 • 7 bedrooms • 6 full & 1 partial baths

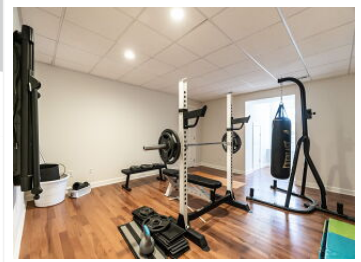
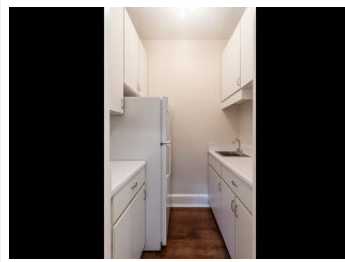
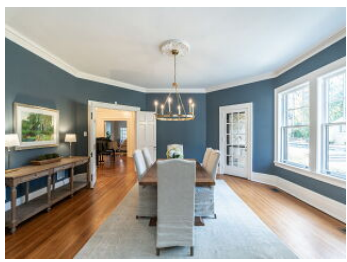
• 8800 square feet



View virtual tour at:
<https://2405glenwood.com/>



Sylvester Brown Shepherd had done his homework. Shepherd, a prominent Raleigh attorney, had purchased a beautiful, estate-sized parcel on the city's outskirts for his family's new home. Given the scale and complexity of his project, Shepherd knew he needed a construction dream team. He entrusted the design to renowned architect James Salter, whose portfolio included the Andrews-London house, Olds Elementary, and the Sir Walter Hotel. To bring Salter's design to fruition, Shepherd teamed with James A. Davidson, one of Raleigh's finest builders, perhaps best known for constructing the famous Cox-Williams house ("Mount Vernon") in Hayes Barton, a replica of George Washington's Virginia estate, as well as White Memorial Presbyterian Church, the Thomas Ruffin house, and Pine State Creamery. Completed in 1928, this landmark property has belonged to only a handful of families, each stewarding its original beauty and extraordinary craftsmanship while throwing wide the doors to its guests (which



Van Fletcher

Broker/Owner
249084

(919) 449-7535

van@vanfletcher.com

<http://www.vanfletcher.com>

Van Fletcher & Co.

Allen Tate

<http://www.vanfletcher.com>



The information contained herein has been obtained through sources deemed reliable, but cannot be guaranteed as to its accuracy. Not intended to solicit buyers or sellers currently under contract with a brokerage.